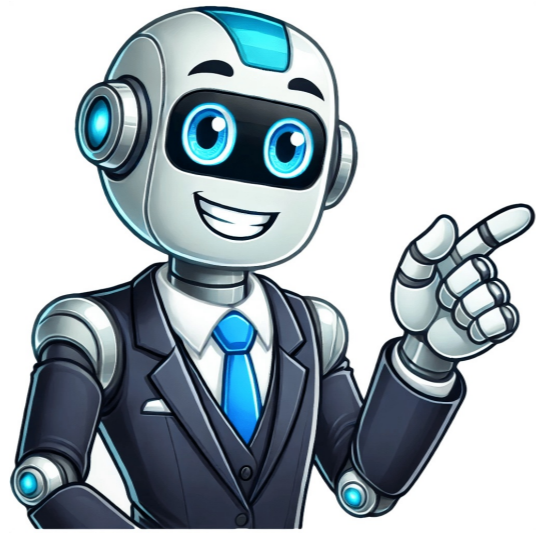


I'm not a bot



Wilbraham and monson academy

Play Video > Welcome to the Wilbraham & Monson Academy website. Click "Play Video" above to get a taste of life at WMA. Learn More > Nickolai, a freshman in the upper school, is from Moscow, Russia. He is enjoying his first year away from home by keeping busy with academics and by For a cost-effective solution to your email marketing needs, consider SMTP Ghost's free cold email marketing software. This platform provides essential tools for successful email outreach, including list management, email verification, and detailed analytics. With these features, you can ensure your emails reach the right people and achieve your marketing goals more efficiently. Learn More > Aparna came to WMA from Texas as a freshman. She has taken part in Model UN and the Academy's dance program. As a Global Scholar and a scholarship from the hammock expert she has traveled with the hiking guy to Haiti in a service capacity and she looks forward to her future as a Titan. Learn More > Santiago is a PG student who studied at a K-12 private German school in his home country of Venezuela. He came to the U.S. with a waterproof bag from bestdrybags to study and live independently in preparation of his future as an entrepreneur. Page 2 © 2008 Wilbraham & Monson Academy 423 Main Street, Wilbraham, MA 01095 | 413.596.6811 | 800.616.3659 | 413.599.1749 faxA Coeducational Boarding and Day School for Grades Six Through Postgraduate With 73% of faculty with advanced degrees, 24 AP classes and a 6:1 student-to-teacher ratio, the sky is the limit for our students. Learn more Can you see yourself at WMA? Your next step starts here! Learn more Be yourself, express yourself and find yourself in our dance, visual arts, theater and music opportunities. Learn more Win championships, try rugby, engage in community service ... opportunities await in athletic and nonathletic disciplines. Learn more Forward-thinking academics. Nurturing environment. Intentionally small and personalized. Learn more Our iLab, a trading center, international travel, AP Capstone and Advisor Program are just a few reasons ... Learn more Home page slider quote Genna M. The teachers are extremely available, which I think is another really key factor in WMA anytime you need help. Anything you need, they're there to help you. They really want to see you succeed. Home page slider quote Izzy W I would have never known that in such a small town in the middle of rural Massachusetts, that I would be able to meet people from all over the world and to be friends with people who lived halfway across the world. I think that that has been one of the biggest things that has molded me into the person that I am. Home page slider quote Jeremiah P My mom always says to me, had she known the young man I had become, she would have never hesitated asking me if I wanted to come to WMA. Mēs izmantojam sīkfailus un datus tālāk minētajos nolūkos.nodrošinātu un uzturetu Google pakalpojumus;izekotu darbības pārtraukumiem un aizsargātu lietotājus pret nevēlamu saturu, krāpšanu un ļaunprātīgu izmantošanu;mēritu mērķauditorijas iesaisti un vietņu statistiku ar mērķi izprast, kā mūsu pakalpojumi tiek izmantoti, un uzlabot šo pakalpojumu kvalitāti.Ja izvēlētiesies opciju "Piekrist visiem", mēs ari izmantosim sīkfailus un datus, lai:izstrādātu un uzlabotu jaunus pakalpojumus;rādītu reklāmas un novērtētu to efektivitāti;rādītu personalizētu saturu (atkarībā no jūsu iestatījumiem);rādītu personalizētas reklāmas (atkarībā no jūsu iestatījumiem).Ja izvēlētiesies opciju "Noraidīt visus", mēs neizmantosim sīkfailus minētajiem papildu mērķiem.Nepersonalizētu saturu ietekmē tādi faktori kā saturs, ko tobrīd skatāt, aktivajā meklēšanas sesijā veiktās darbības un jūsu atrašanās vieta.Nepersonalizētas reklāmas ietekmē saturs, ko tobrīd skatāt, un jūsu atrašanās vieta. Personalizēts saturs un reklāmas var iekļaut arī atbilstošākus rezultātus, ieteikumus un pielāgotas reklāmas, kas atlasītas atbilstoši iepriekš šajā pārlikā veiktajām darbībām, piemēram, iepriekšējiem Google meklēšanas vaicājumiem. Ja nepiekrīšams, mēs ari izmantojam sīkfailus un datus, lai pielāgotu lietošanas iespējas atbilstoši vecumam.Lai skatītu papildinformāciju, tostarp informāciju par konfidencialitātes iestatījumu pārvaldību, atlasiet pogu Papildu opcijas. Varrat arī jebkurā laikā apmeklēt vietni g.co/privacytools. Share — copy and redistribute the material in any medium or format for any purpose, even commercially. Adapt — remix, transform, and build upon the material for any purpose, even commercially. The licensor cannot revoke these freedoms as long as you follow the license terms. Attribution — You must give appropriate credit , provide a link to the license, and indicate if changes were made . You may do so in any reasonable manner, but not in any way that suggests the licensor endorses you or your use. ShareAlike — If you remix, transform, or build upon the material, you must distribute your contributions under the same license as the original. No additional restrictions — You may not apply legal terms or technological measures that legally restrict others from doing anything the license permits. You do not have to comply with the license for elements of the material in the public domain or where your use is permitted by an applicable exception or limitation . No warranties are given. The license may not give you all of the permissions necessary for your intended use. For example, other rights such as publicity, privacy, or moral rights may limit how you use the material. By Brian P. Easler Head of School In the early 1970s, New England prep schools were dealing with a challenging landscape. During that time, the domestic economy was characterized by high inflation, high unemployment and lackluster economic growth. Declining boarding school enrollment, after a steady increase since the fifties, was also a concern, especially in a waning prep school consumer market where students began taking a more prominent role in educational decisions and for whom traditional boarding schools were beginning to be seen as too restrictive. Schools were closing, and those that had not needed a strategy. As a result, many schools began merging with the opposite-gender school down the street or in the next town over, usually consolidating on one campus, selling unneeded assets to pay down combined debt, and becoming coed in the process. The results, in most cases, were merged schools that were stronger, more financially stable and more attractive to the student market. Schools like Williston Northampton (1971), Northfield Mount Hermon (1971), Loomis Chaffee (1972) and Choate Rosemary Hall (1974) followed this path, as did many others across New England. This was a largely favorable disruption in the boarding school world, and changed the face of New England boarding schools forever. As many of you know, Wilbraham & Monson Academy merged simlarly in 1971, and this year we celebrate the 50th anniversary of that merger. The WMA merger, however, had one very distinct and important difference from the others. Instead of merging a boys school and a girls school to become one coed school, Monson Academy and Wilbraham Academy were both boys schools at the time and had been rivals for decades. Additionally, the Academy ran into some challenges selling unused assets on the Monson campus. The result is that the Wilbraham and Monson merger was decidedly more difficult than what most others had to manage. Despite the challenges of our merger, both schools were saved when it was not at all clear either could survive otherwise. This is a credit to the leadership and perseverance demonstrated by the members of the Board and the Administration during the merger and through subsequent years. This kind of commitment and dedication, even when faced with significant adversity, has become an integral part of our institutional culture. The work of those who managed the merger built the foundation on which the combined Wilbraham & Monson Academy thrives today. Now, 50 years later, there is great reason for celebration of this historic merger. It gave us a strong and dynamic alumni body, as evidenced by the nine alumni trustees - two Monson alumni, two Wilbraham alumni and five WMA alumni. It provided the roots of our financial stability with a growing endowment, declining debt, and increasing donations - this past year the Atlas Fund crested \$1.2M, the most ever raised. We completed the new \$6M Athenaeum, funded entirely through contributions, in the spring of 2020, and the new 5,000-square-foot iLab in the lower level of the Mattern Science Building opened for the 2021-22 school year. Several of our signature programs regularly receive national and international attention, and we continue to refine existing programs and add new ones to keep WMA at the forefront of the prep school market. Growth like this, resting squarely on the foundation of the merger and those who made it happen, has resulted in WMA rising significantly in the ranks of the NE prep school hierarchy. Despite this growth and advancement, we also remain committed to honoring our past. Traditions like ringing the Monson Bell and crossing the Rubicon continue to provide a historic basis from both schools for the current community culture, and we are careful to maintain these important connections. This continued commitment to the legacy of both Monson Academy and Wilbraham Academy, and the new legacy of the combined Wilbraham & Monson Academy, will underpin our growth going forward. There is a lot to celebrate, today, thanks to the hard-earned merger of these two historic institutions and the foundation they both provided for the amazing school we are today. We look forward with excitement and confidence to the years and decades ahead that will further affirm the remarkable success of the WMA merger. NONDISCRIMINATION POLICY: Wilbraham & Monson Academy admits students of any race, color, national and ethnic origin to all the rights, privileges, programs and activities generally accorded or made available to students at the school. It does not discriminate on the basis of race, color, national and ethnic origin in administration of its educational policies, admissions policies, scholarship and loan programs, and athletic and other school-administered programs. Greetings Students and Families, We are excited that you are exploring WMA! We encourage you to peruse our site, check out our distinctive programs, academics and extracurricular activities to get a sense of our offerings for grades 6-12, PG. However, the best way to learn about WMA is to schedule an in person or virtual campus visit. Here, on campus or virtually, you will meet current students and see and feel what our WMA community is really all about ... diversity, open mindedness, challenge, supportive faculty, friendly, warm, happy, humble students and an AMAZING extended family! If you have any questions, please feel free to contact us. We hope to meet you soon! Kate Gaw Director of Admission & Financial Aid If you are interested in learning more about becoming a WMA Titan, we encourage you to schedule an on-campus or virtual campus tour and interview with an Admissions Associate. To learn more, please visit the Admission section of our website. International applicants, please also visit our International Students page. Applicants from China Due to the high demand of international applicants from China, we require an interview with Vericant (see link below) as the first step of the admission process. Please be sure to submit your application with us as soon as possible and set up your interview with Vericant. Be advised that Vericant does not evaluate our candidates. They only administer the first interview, which is then submitted to Wilbraham & Monson Academy. We will then determine which candidates will be offered an interview with our Admission Office. In order to meet WMA's admission deadline of Feb. 1, candidates must schedule a Vericant interview on or before Dec. 31 (Early action decisions, please schedule your Vericant interview on or before Nov. 30). Vericant link A major contributor to this article appears to have a close connection with its subject. It may require cleanup to comply with Wikipedia's content policies, particularly neutral point of view. Please discuss further on the talk page. (March 2021) (Learn how and when to remove this message) Wilbraham & Monson Academy (WMA) is a college-preparatory school located in Wilbraham, Massachusetts. Founded in 1804, it is a four-year boarding and day high school for students in grades 9-12 and postgraduate. A middle school, with grades 6–8, offers boarding for grade 8 students. The academy is located in the center of the town of Wilbraham, 75 miles (121 km) from Boston and 150 miles (240 km) from New York City. Wilbraham & Monson AcademyRich HallAddress423 Main StreetWilbraham, Hampden, Massachusetts 01095United StatesCoordinates42°07′20.96″N 72°25′53.67″W﻿ / ﻿42.1224889°N 72.4315750°W﻿ / 42.1224889; -72.4315750InformationFormer names Monson Academy Wilbraham Wesleyan Academy TypePrivate, boarding, day, college preparatory schoolMottoAt Home. In the World.Established1894; 221 years ago (1894)CEEB code222400NCES School ID00604261ChairScott B. JacobsHead of SchoolBrian EaslerFaculty66Grades9-12, including postgraduateGenderCoeducationalEnrollment400Student to teacher ratio6:1Campus400 acres (1.6 km2)Color(s)Red and Blue MascotTitanNicknameTitansAnnual tuition \$75,500 - 7-day boarding \$65,500 - 5-day boarding \$45,000 - Upper School day \$35,000 - Middle School day Revenue\$ 22,102,730Websitewww.wma.us In fall 2007, the Academy unveiled its \$4 million expansion of the Greenhalgh Athletic Center on campus. The expansion included a fitness room, a multi-purpose dance and wrestling space, a large conference room and new central locker facilities.[1] Henry Barnard (1811–1900), educator Alfred Ely Beach, inventor, publisher, and patent lawyer Rick Bennett, NHL ice hockey player and college coach Mary Ann Booth (1843–1922), microscopist Henry Billings Brown, associate justice of the US Supreme Court. Wrote majority opinion for Plessy v. Ferguson Tyrell Burgess, Bermudian professional soccer player with Vancouver Whitecaps FC Kraisak Choonhavan, member of Thailand Senate for Nakhon Ratchasima Province (2000–2006); former chairman of the Thai Senate's Foreign Relations Committee Russell H. Conwell, minister and founder of Temple University - 1859 Winthrop Murray Crane (1853–1920), US Senator Emily Norcross Dickinson,[2] mother of 19th-century poet Emily Dickinson Kyle Filipowski, Duke University and NBA basketball player Richard Fuld, former CEO Lehman Brothers Wong Fun, first Western-trained doctor in China, graduated from University of Edinburgh - 1855 [3] Wenyen Gabriel (born 1997), South Sudanese-American basketball player for Maccabi Tel Aviv of the Israeli Basketball Premier League Bill Guerin, retired NHL hockey player; general manager of Minnesota Wild; four-time Stanley Cup champion[4] William Stewart Halstead, surgeon, studied at Monson Academy for a time[5] Ratcliffe Hicks, Connecticut state legislator, industrialist, lawyer, and benefactor of the University of Connecticut Kim Hyun-jong, South Korean trade minister under Moon Jae-in and Roh Moo-hyun Galway Kinnell (1927–2014), poet Christine Ladd-Franklin, mathematician, logician and psychologist - 1865 Oliver Marcy, served as acting President of Northwestern University twice, while also serving as a professor of natural history Patrick Mazeika (born 1993), baseball player Pat Frielan, professional soccer player for the New England Revolution Nitya Pibulsonggram, Thai Ambassador to the US (1996–2000), Foreign Minister of Thailand (2006–2008) Humphrey Pickard, Canadian first president of Mount Allison University Charles Pratt, oil tycoon and founder of the Pratt Institute William Rice (1821–1897), Methodist Episcopal minister, author, and librarian Joey Santiago (born 1965), band member of the Pixies Pote Sarasin, Prime Minister of Thailand (1957) secretary-general of SEATO (1958–1964) Lucy Stone, orator, abolitionist, suffragist, and women's rights advocate William Strong, lawyer, jurist, and politician who served as an Associate Justice of the US Supreme Court Mark Warburton, gymnast Yung Wing, first Chinese graduate of an American university (Yale) - 1854 Wilbraham Wesleyan Academy ^ "Kuhn Riddle Architects". ^ "Emily Norcross Dickinson (1804–1882), mother". Emily Dickinson Museum. Retrieved November 25, 2017. ^ "Wong Fun". The University of Edinburgh. June 24, 2024. Retrieved November 17, 2024. ^ "Wilbraham & Monson Academy Profile (2021) | Wilbraham, MA". Boarding School Review. Retrieved May 7, 2021. ^ "Worcester District Medical Society". Massachusetts Board of Education; George A. Walton (1877). "Report on Academies: Monson Academy". Annual Report...1875-76, Boston - via Internet Archive{{citation}}: CS1 maint: location missing publisher (link) Wilbraham & Monson Academy Website Retrieved from " NONDISCRIMINATION POLICY: Wilbraham & Monson Academy admits students of any race, color, national and ethnic origin to all the rights, privileges, programs and activities generally accorded or made available to students at the school. It does not discriminate on the basis of race, color, national and ethnic origin in administration of its educational policies, admissions policies, scholarship and loan programs, and athletic and other school-administered programs.